

C
H
E
S
T
E
R
T
O
W
N
S
H
I
P

Y
T
N
U
O
C
A
G
O
H
A
Y
U
C

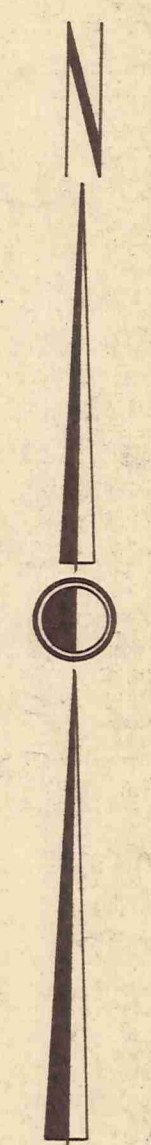
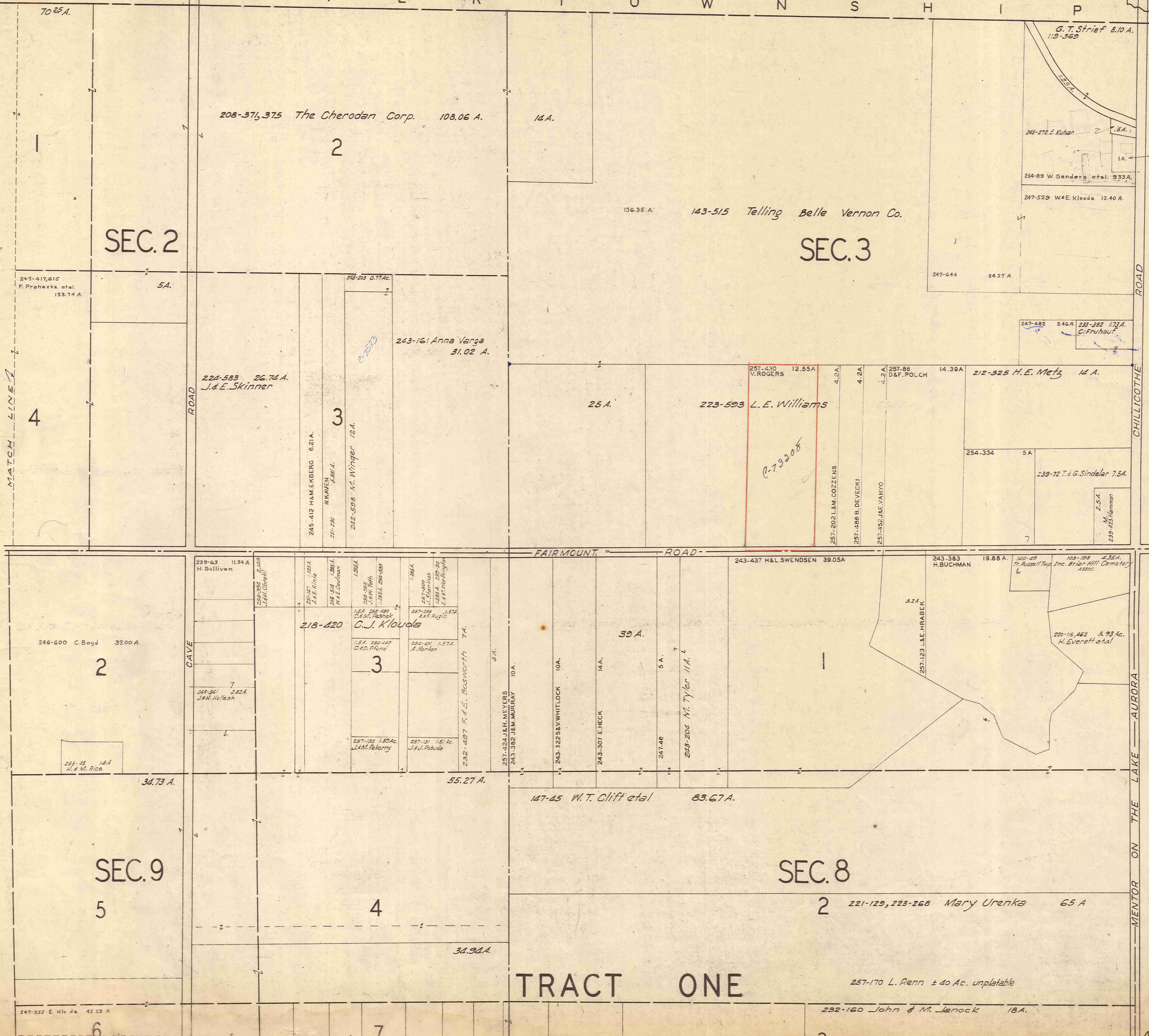


SCALE 1" = 300'
MAR. 1, 1954

A	B	C	D
E	F	G	H
I	J	K	L
M	N	O	P

RUSSELL-1

C H E S T E R T O W N S H I P 306

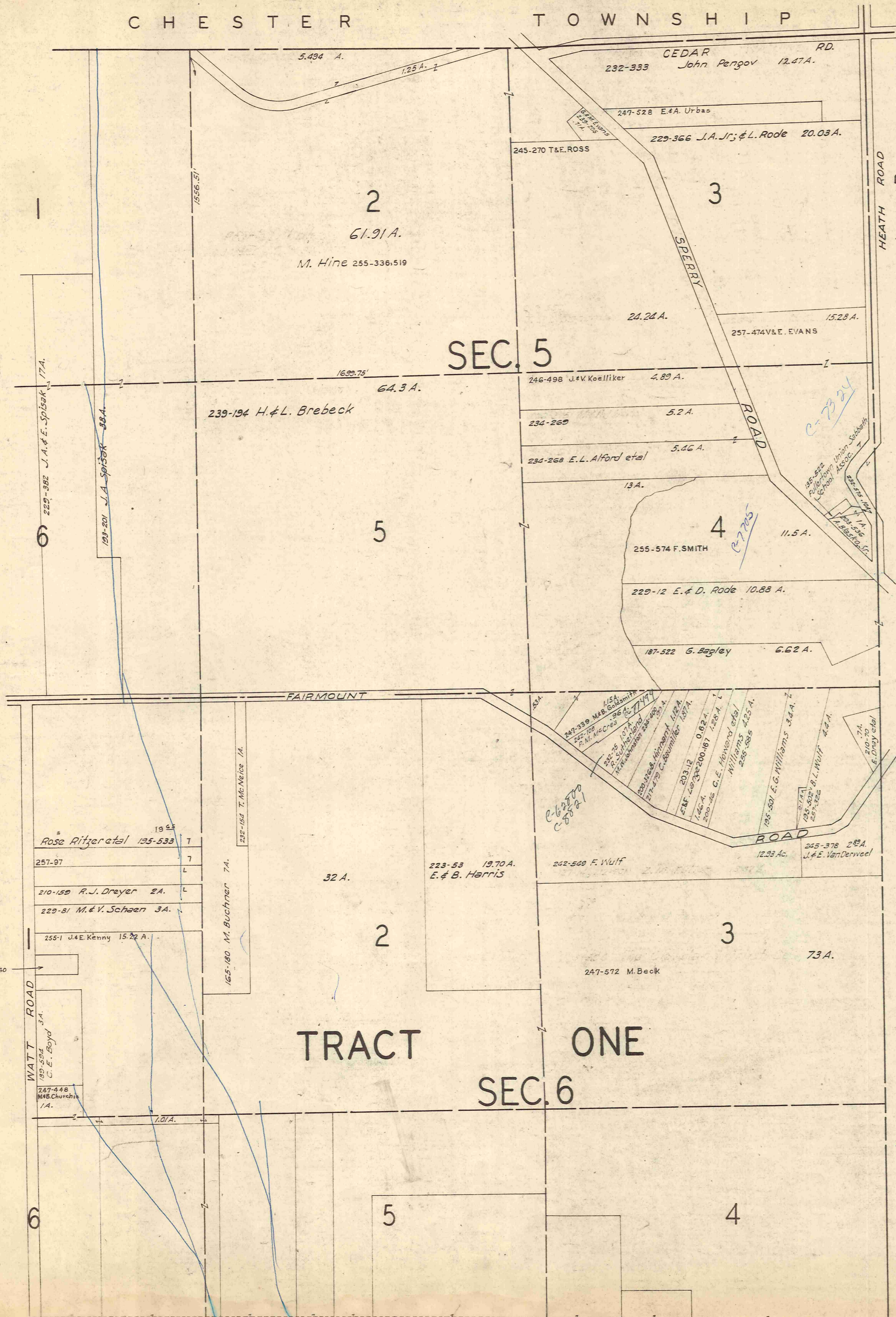


SCALE 1" = 300'
MAR. 1, 1954

A	B	C	D
E	F	G	H
I	J	K	L
M	N	O	P

RUSSELL-B

CHESTER TOWNSHIP

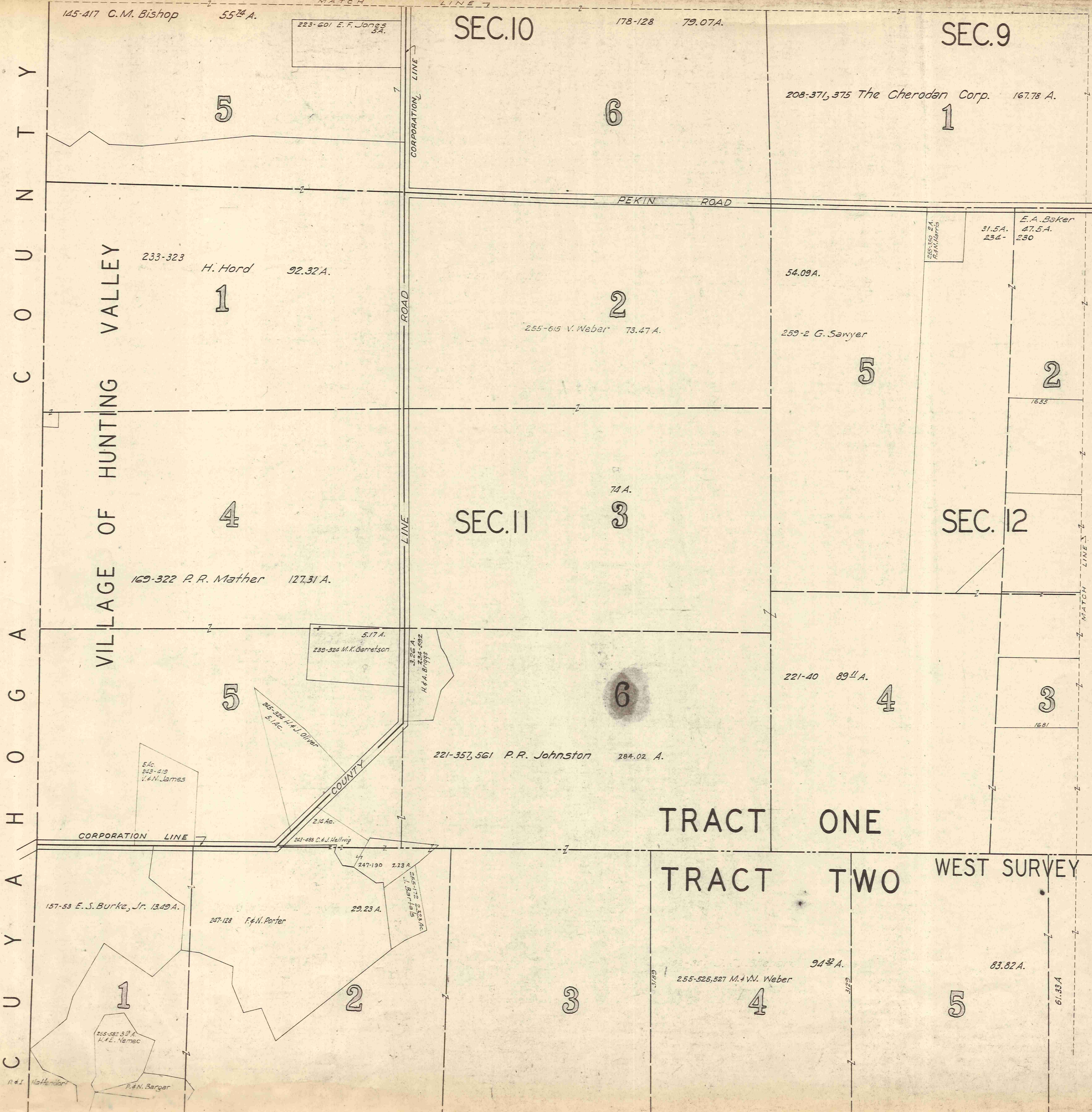


SCALE 1" = 300'
MAR. 1, 1954

*Poor title
1/2 + 1/2 station in
Julian town area*

A	B	C	D
E	F	G	H
I	J	K	L
M	N	O	P

RUSSELL - D



Y
T
N
U
C
A
H
O
G
A
Y
C
U
Y
C



SCALE 1" = 300'
 MAR. 1, 1954

A	B	C	D
E	F	G	H
I	J	K	L
M	N	O	P

RUSSELL-E



SCALE 1"=300'
MAR. 1, 1954

247-356 E. KLOUDA
255-498
C. Klouda
13.23 A
5A
SEC. 9
6

MATCH LINE 7
226-328 A. & R. Dickson 34.91 A.
705 A.
8 A.
701 A.
8.28 A.
701 A.
7 A.
255-71 J. TRISKA
255-71 J. FRUHAUF
255-71 E. FRUHAUF
255-71 S. BAUMGARTNER
255-71 F. FRUHAUF
255-71 M. KUBICHEK
255-71 B. BLISS
259-132 Florence Kral 10 A.

SEE RUS-B
18.58 A.
37 A.
SEC. 8
247-248 G. & R. Beck 13.02 A.
246-465 H. Squire 1.40 A.
233-363 M. Dines 2.48 A.
251-187 M. Borges .5 A.
254-134 W. Dorflinger .5 A.
254-70 N. M. Nielsen 2 A.
251-210 A. & R. Milavick 3 A.
208-371, 375 The Cherodan Corp. 20.31 A.
20.31 A.

257-226 C. & I. PAGE
3 A.
254-564 J. & H. HORNAK
257-189 1.37 A.
255-535 1.83 A.
T. J. JONES
10 A.
251-31 R. D. Haehn
257-360 2.62 A.
C. & A. NOVY
41.88 A.
234-230 E. A. Baker
255-299 3 A.
F. & F. POKORNY
1635
234-47 D. C. Prucha 23 A.

193-585, 217-193 A. A. Beduhn et al 38 A.
17.36 A.
221-85 C. Arbuckle et al 53.75 A.
254-472 31.02 A.

PEKIN ROAD
10 A.
10 A.
257-158 H. & G. CAMPBELL
10 A.
242-217 J. & M. Storc
234-240 M. & R. Painter
247-664 E. J. Stefanik 10 A.
254-39 1.56 A.
223-327, 226-565 G. & E. Erikson 2.88 A.
217-402 10 A.
L. & E. Schumaker
254-205 2 A.
254-318 2 A.
237-87 1 A.
252-318 2 A.
R. & D. Johnson
N. Hayes 245-277 1 A.
239-172 R. C. Williams
223-327, 226-565 G. & E. Erikson 2.88 A.
43.56

MATCH LINE 1
SEC. 12
242-399 D. & E. Hayman 23.83 A.

216-574 G. C. Bliss 41.035 A.
218-510 J. Karsnak et al 33.775 A.

251-35 J. Frankel 130 A.
SEC. 13
2

229-457 W. & H. Hayman 16.07 A.
229-503 T. Raskai et al 16.07 A.
247-681
1681'
255-815 V. WEBER 89.4 A.

246-591 2.39 A.
J. & R. Hyatt
229-220 2.29 A.
J. R. & S. Howe
239-424 1.29 A.
E. & L. Richardson
223-2 2.28 A.
F. Hollis et al

239-269 H. H. Kline 96.88 A.
145-454 C. A. Humphries 108 A.
167-206 F. S. Thwing et al 100 A.

WEST SURVEY
6
255-525-527 M & W. WEBER
61.33 A.

MIDDLE SURVEY
14
3-1134 Tor. B. Kovach 12.11 A.
Torrens
S. & E. Farkas 3-1118 Tor. 6 A.
Torrens 5 A. 4-1209
3-954 Torrens 5 A.
H. Goesting

206-337 27.60 A.
Spencer Braden
Torrens
145-454 C. A. Humphries 108 A.

TRACT ONE
TRACT TWO
9
10
13

5
182-71 2.95 A.
167-619 3 A.
Board of Educ.
254-96 G. & D. Bird 0.64 A.
242-397 Jas. Manek
C. 112-560 Russell Tr.
3784

A	B	C	D
E	F	G	H
I	J	K	L
M	N	O	P

RUSSELL - F

SEC. 8

SEC. 13

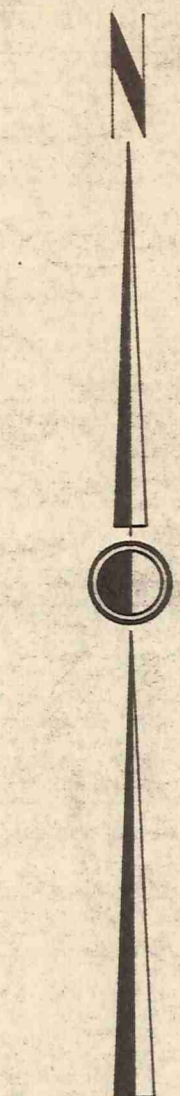
SEC. 7

SEC. 6

SEC. 15

SEC. 14

TRACT ONE
TRACT TWO
MIDDLE SURVEY EAST SURVEY

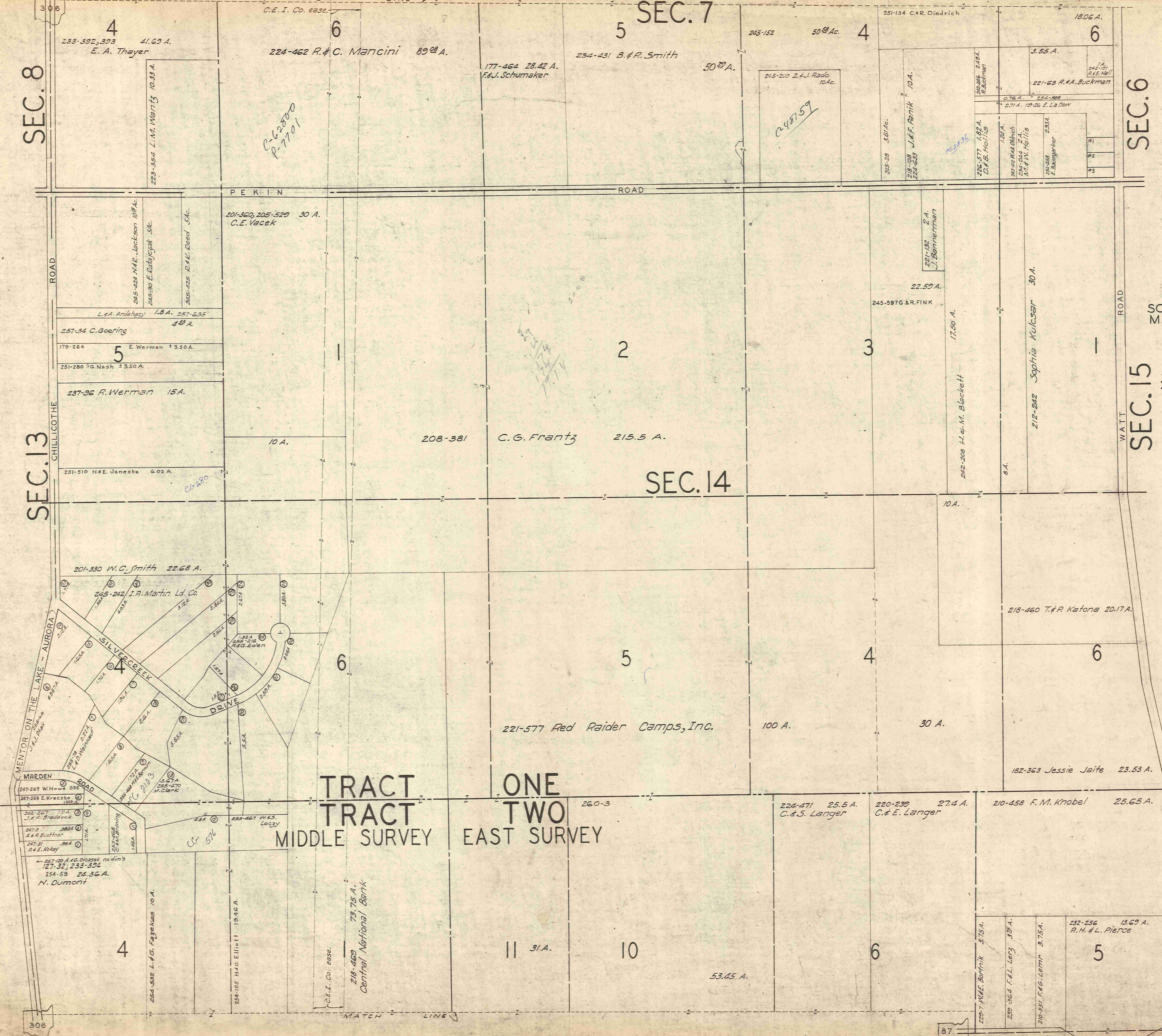


SCALE 1" = 300'
MAR. 1, 1954

- #1 251-592 W.L. Schoulin 0.50 A.
- #2 251-593 C.A. Adams 0.50 A.
- #3 251-594 A.C. Adams 0.50 A.

A	B	C	D
E	F	G	H
I	J	K	L
M	N	O	P

RUSSELL-G



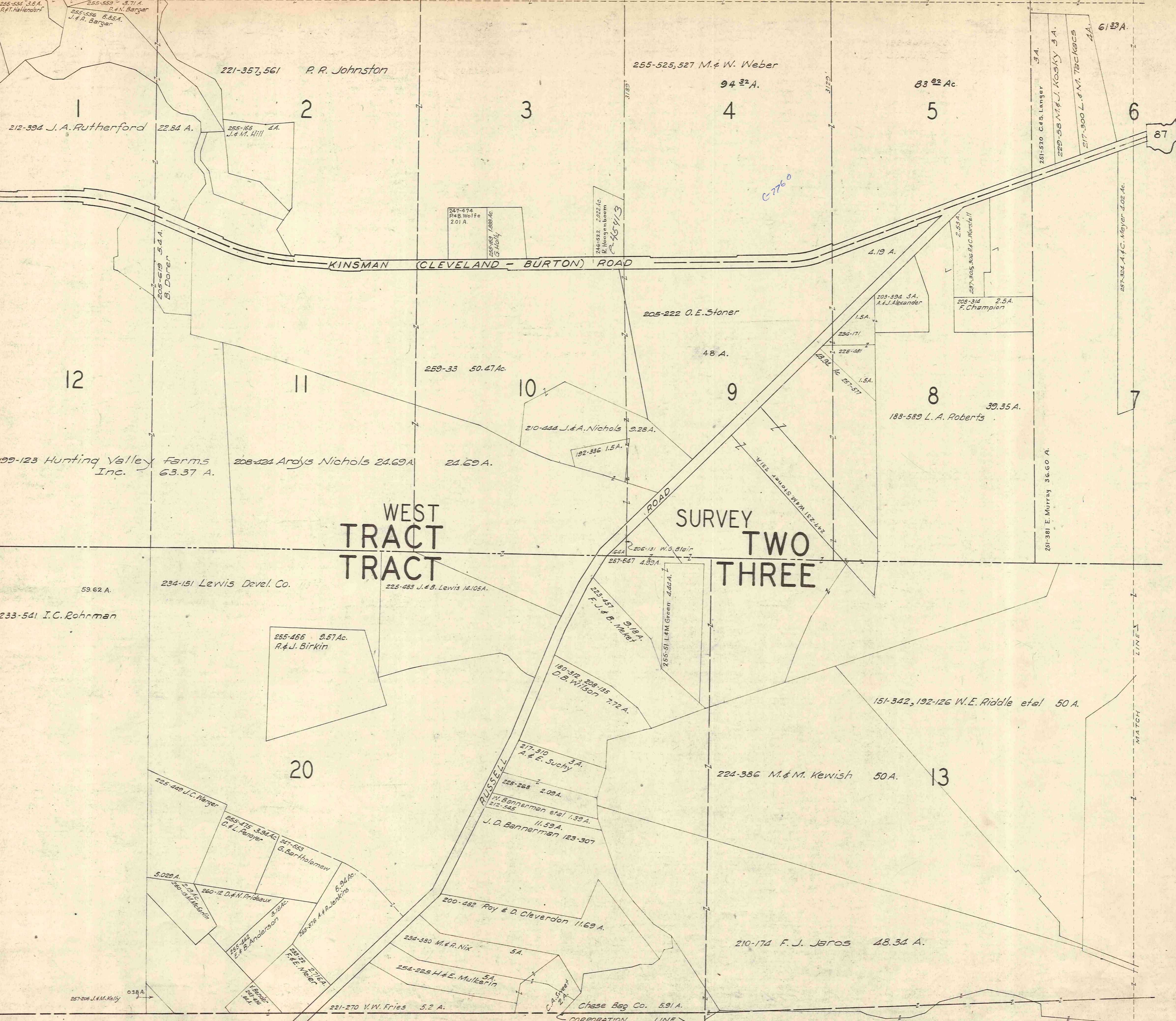
P-62880
P-7701

248759

CG 280

C
O
U
N
T
Y

C
H
A
G
R
I
N
F
A
L
L
S



WEST TRACT
TRACT
SURVEY TWO THREE

SCALE 1"=300'
MAR. 1, 1954

A	B	C	D
E	F	G	H
I	J	K	L
M	N	O	P

RUSSELL-I

V
I
L
L
A
G
E
O
F

C
H
A
G
R
I
N
F
A
L
L
S

255-525-527
M&W WEBER

306

87

KINSMAN (CLEVELAND - BURTON) ROAD

HEMLOCK RD.

218-335 1.85 A.
J. & M. Pirloun
A. Corney 2 A.
234-120 B. & E. Larsen 2.4 A.
221-22 3 A.
H. Mathews
255-50

221-184 2.5 A.
L. & H. Sands

223-713 B. & H. Devoe 1.05 A.

6

HEMLOCK HILL DEVELOPMENT
VOL. 6 PGS. 5-6-7-8-9-10 PLATS
SEE SHEET 14-Q EAST

87

SUBDIVISION
14 Q & R

15

12

11

8

247-604
H. D. Bullock
2.10 A.

237-551 C. & K. Evans 6 A.

232-226 S. L. Channon 6 A.
243-143 et al

234-45 E. H. Wisner 8 A.

217-212 J. & L. Beniger 10 A.

5 A. 257-95

195-446 A. H. Meyer et al 10.03 A.
C-26702

10.04 A. 255-228 C. KETZ

218-284 O. J. Jaros et al 13.68 A.

254-171 H. A. Perry 3.31 A.

224-599 J. M. Lustig 14.02 A.

291-234
255-397
R. Singer
6.02 A.

251-371 C. H. & M. W. Devoe 1.05 A.

235-602 L. & E. Adam
217-459 E. Johnson 11 A.
215-9

220-173 12.62 A.

ESTATES
SHEETS

CHAGRIN MILLS ROAD

TRACT TWO
TRACT THREE

95.59 A.
255-460 Resort & Realty Co.

RIVERDALE
SEE

177-5 65.18 A.

12

234-496 C. G. Mathews et al 61 A.

229-395 G. & E. Motko 5 A.

220-412 C. & M. White 5 A.

251-321, 425 J. Studnicka 2.5 A.

254-264 L. & H. JANKOWSKI 2.6 A.

217-54 T. H. Fajda et al 12.14 A.

215-419 4.88 A.
L. R. Buchner et al

217-523 2 A.

1 A.

1 A.

1 A.

245-583 G. F. Graham
229-345 2 A.
R. E. Evans

228-97 2.04 A.
M. & M. Scott

245-104 A. Triman
257-299

245-261 1.107 A.
J. Spencer

MATCH LINE

143-353 Chas. Modroo et al
95.76 A.

13

14

247-329
C. Pringle
0.5 A.

245-446 3.84 A.
E. Holland
207-461
0.86 A.
E. M. Hart

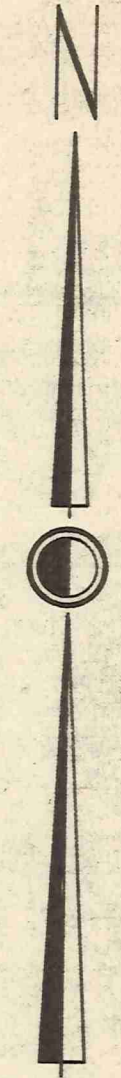
MUSIC STREET

212-209
L. V. Mathews
14 3/4 A.
C-26002

234-497 38.94 A.

226-402
E. & J.
Genske
1 A.

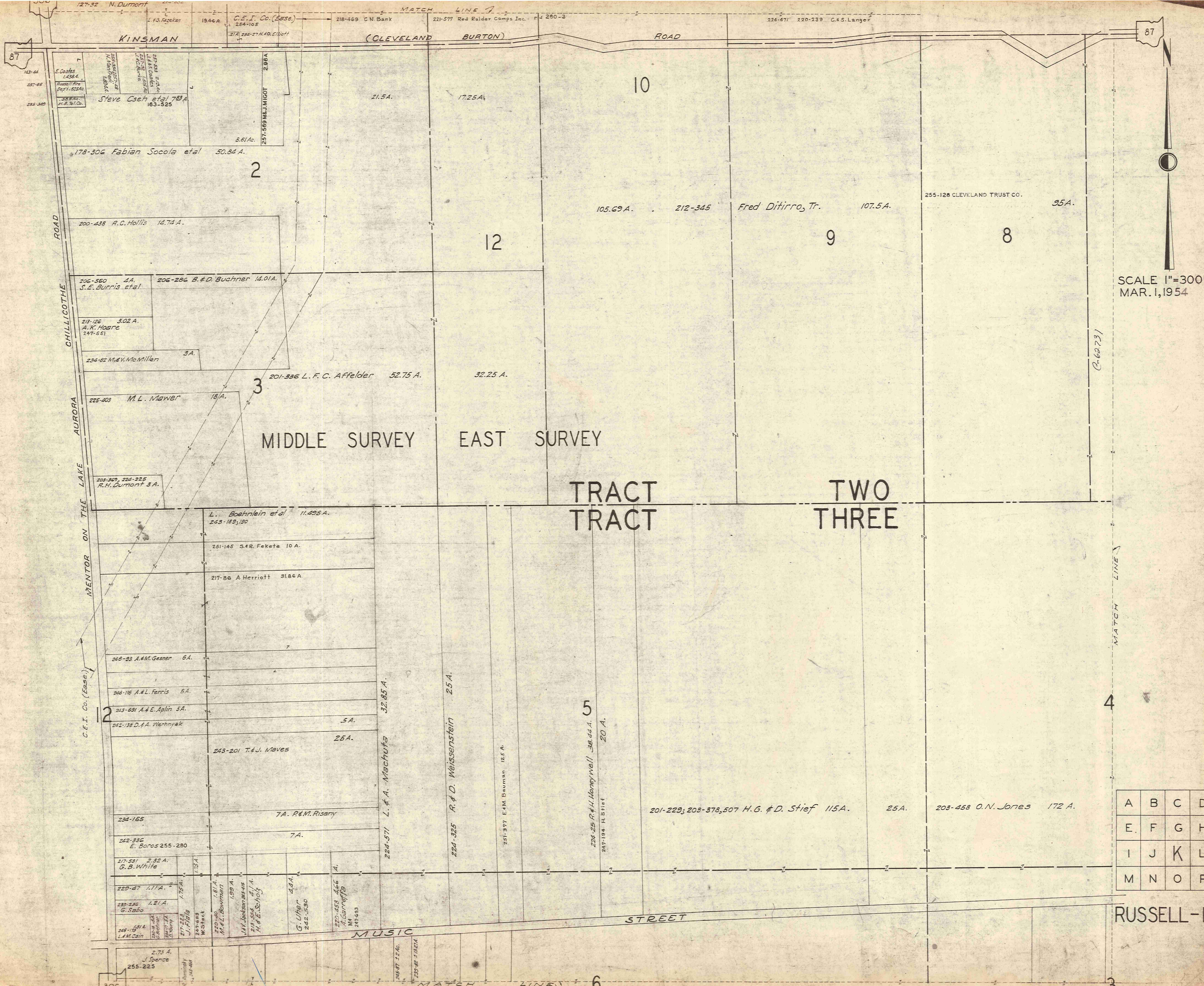
CHILLICOTHE ROAD
ON THE LAKE AURORA
(MENTOR)
C-265-583 Missy
Missy
B-521-282 W. & M. Haddock



SCALE 1"=300'
MAR. 1, 1954

A	B	C	D
E	F	G	H
I	J	K	L
M	N	O	P

RUSSELL-J



SCALE 1"=300'
MAR. 1, 1954

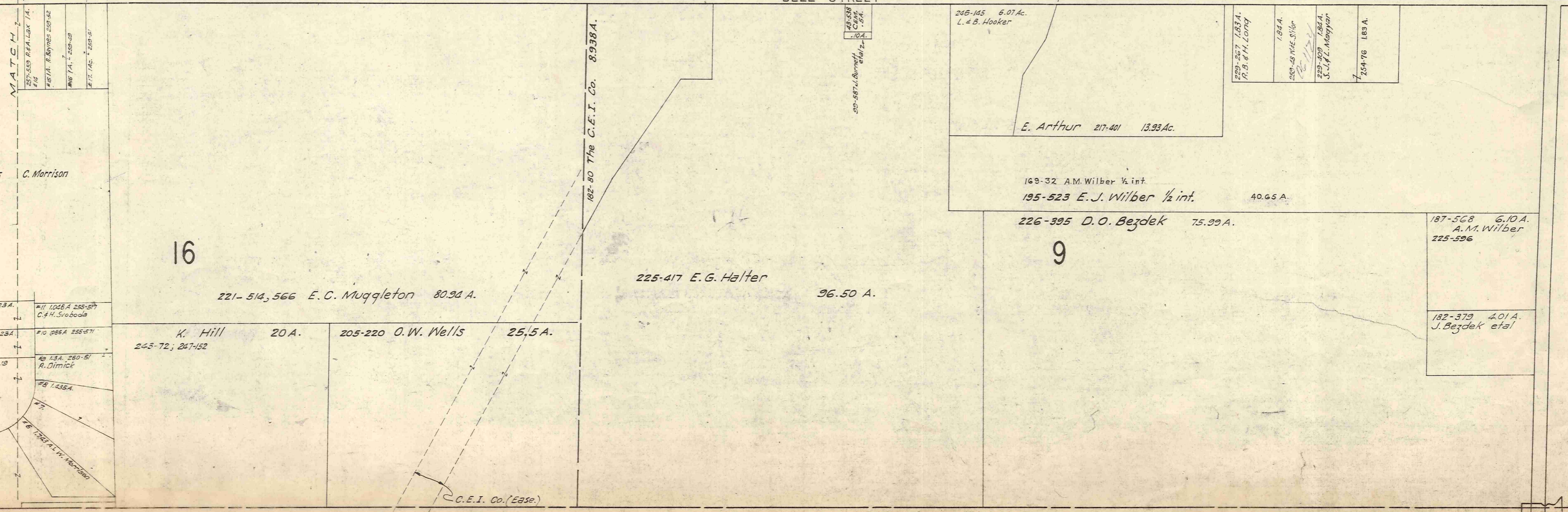
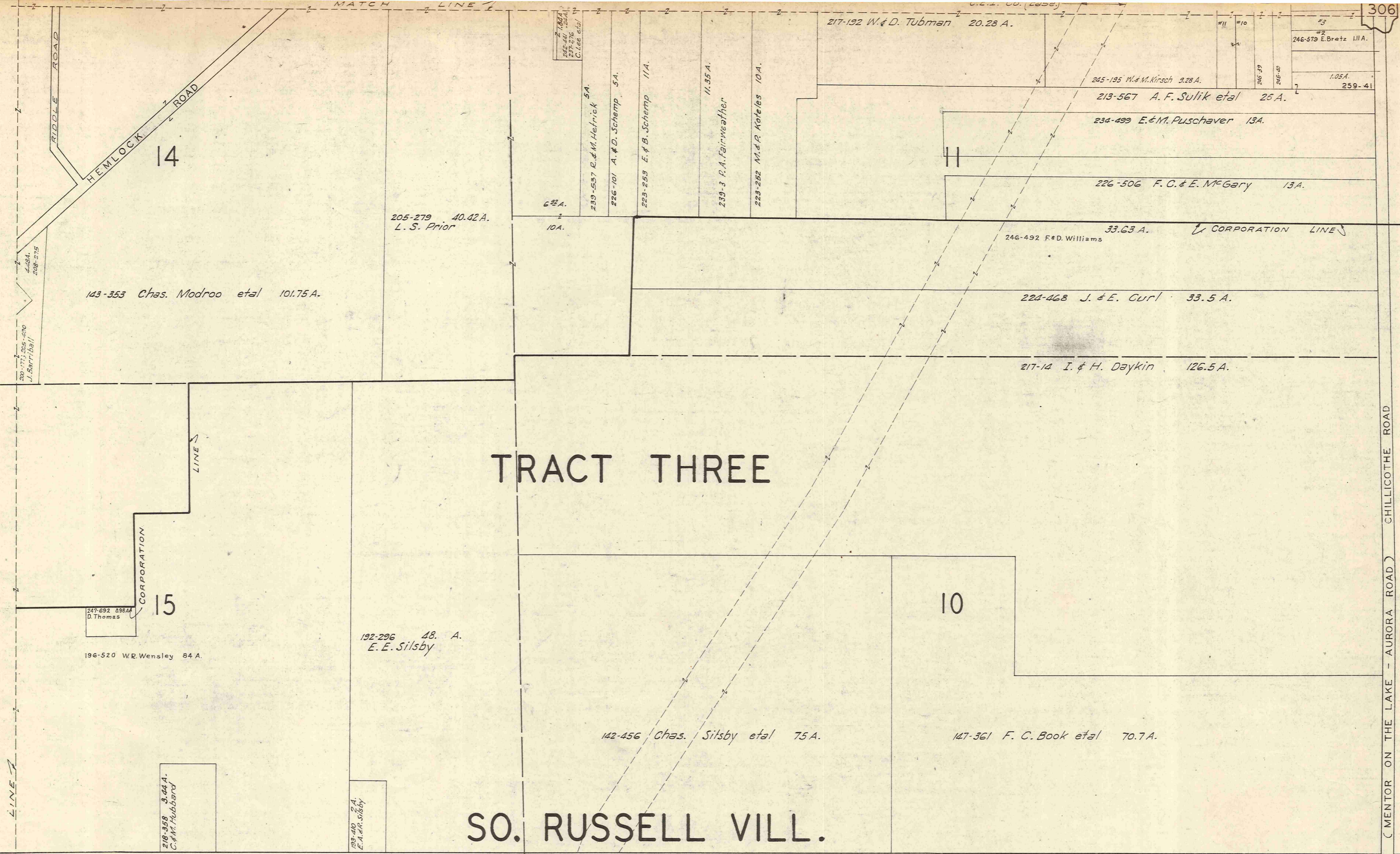
A	B	C	D
E	F	G	H
I	J	K	L
M	N	O	P

RUSSELL-K



SCALE 1"=300'
MAR. 1, 1954

CHILLICOTHE ROAD
AURORA ROAD
MENTOR ON THE LAKE



A	B	C	D
E	F	G	H
I	J	K	L
M	N	O	P

RUSSELL - N

TRACT THREE

188-320 Ladimer Hejduk et al 166.25 A.

255-83 43 A.
232-166 H. Davidson

206-486 31.77 A.
Edna Pekrul

6

3

7

2

SO. RUSSELL VILL.

PAW PAW LAKE SUBDIVISION
REC. OF PLATS VOL. 1 PG. 54
SEE RUSSELL "U"

Original lot 10 In 3 Russell Township

PLEASANT ACRES SUBD'N No 2 VOL. 6 PGS 21 & 22

- 255-223 2.7 A. J. Spence
- 255-305 S. C. Banus 2 A.
- 250-143 T. Kemmerling 2 A.
- 205-15 5.87 A. E. & M. Hoehn
- 205-339 5.84 A. A. & T. Hoerigmen
- 257-295 J. & M. OKLESSEN
- 224-346 8.46 A. F. A. Hayes
- 254-44 R. D. Lubecky 1.44 A.
- CG 401 1.57 A.
- 254-159 N. M. Disten 1.56 A.
- 256-207 C. & N. Cripe 1.55 A.
- 257-822 D. L. Parrish 1.55 A.
- 257-401 J. G. Wark 1.55 A.
- 251-503 E. Uhrig 1.53 A.
- 251-216 W. M. Haar 1.53 A.
- 1.64 A.
- CG 105 1.52 A.
- 251-451 W. Troyen 1.52 A.
- 255-530 MILKAP BLDG. CO 1.52 A.
- 251-215 A. Draves 1.52 A.
- 251-211 J. B. Jack 1.52 A.
- 257-570 M. P. Dalton 1.52 A.
- 1.52 A.
- 254-248 R. & A. CAMARATO
- 255-416 R. & J. Lettinger 1.52 Ac.
- 257-573 J. & F. Miller 3.78 A.

- 254-429 J. R. THOMAS 10 A.
- 254-417 W. L. FUEGER 20 A.
- 239-606 L. & A. Vessley 10 A.
- 254-443 F. & F. MEJSTRIK 10 A.
- 239-516 F. & F. MEJSTRIK 9.3 A.
- 259-82 G. & D. Stone 13.27 A.
- 229-421 C. R. ZORBEY 10 A.
- 229-422 H. R. Lukes 10 A.
- 10 A.

217-602 H. & I. Krauthamer 153.22 A.

255-108 B & P Steel 147 A.

232-286 16.08 A.
F. W. & S. Edmonds

BELL STREET

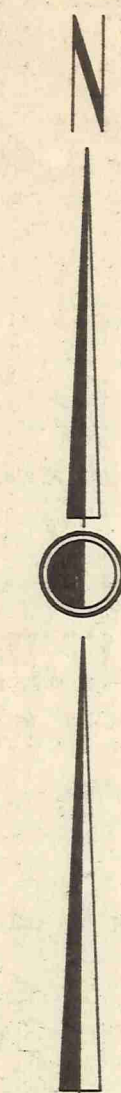
- 201-509 A. & A. Fairweather
- 202-233 W. L. Russell
- 15 A.
- 218-415 4.04 A. G. L. Palmer
- 219-268 4 A. B. Hoehn
- 187-568 6 A. H. D. Wilbur
- 225-595
- 169-32 15.46 A. A. Wilbur et al
- 205-600 16 A. L. McLaughlin

- 156-221 R. A. Warren 131.25 A.

- 239-590 W. & E. Grierson 65 A.

- 233-240 H. V. Williams 83.29 A.
- 246-511 A. & E. Toth 8 A.

- 212-414 R. & D. Mathews 91.5 A.
- 21.6 A.



SCALE 1"=300'
MAR. 1, 1954

A	B	C	D
E	F	G	H
I	J	K	L
M	N	O	P

RUSSELL-O

P A I N B R I D G E T O W N S H I P

TRACT THREE

186-604 Chas. Ferris et al
50 A.

212-407 E. & L. Pugsley 101.29 A.

3

SO. RUSSELL VILL.

N
E
W
B
R
I
D
G
E
T
O
W
N
S
H
I
P

SCALE 1"=300'
MAR. 1, 1954



A	B	C	D
E	F	G	H
I	J	K	L
M	N	O	P

RUSSELL - P

B A I N B R I D G E T O W N S H I P

LINE 1
MATCH

CORPORATION LINE

BELL STREET

SNYDER ROAD

206-487, 556 Olga Gabram 20 A.

229-355 Frank & O. Peck 10 A.

217-571 B. & M. Balogh 20 A.

170-287
247-314
B. Manak et al 25 A.

229-538
G. & C. Saylor
49 A.

254-235 J. & D. Ames
47 A.

26-72 A.

261-494 K. E. Rink

220-264 K. & E. Rink 8.75 A.

230-533 A. & M. Kondras

228-156 J. & C. Sekeres 13.44 A.

W. E. Collier 13.44 A. 239-418

245-83 10.7 A.

242-8 J. A. Harper 5 A.

J. J. & A. Saylor 5 A. 243-417
10 A.

2

254-604 T. A. Poplar

245-403 J. & M. Berichs 10 A.

10 A. 254-491 A. & J. Horagowsky

224-465 H. & E. Kutis 10 A.

223-450 N. Johnson 10 A.

224-481 E. J. Thompson 10 A.

10 A.

249-538 L. & M. Kimball

251-502 H. Klein 10 A.

225 A.
E. & M. Taskacs
243-653

205-116 L. H. Dellner 22.62 A.

226-296 F. & M. Dykes 13.18 A

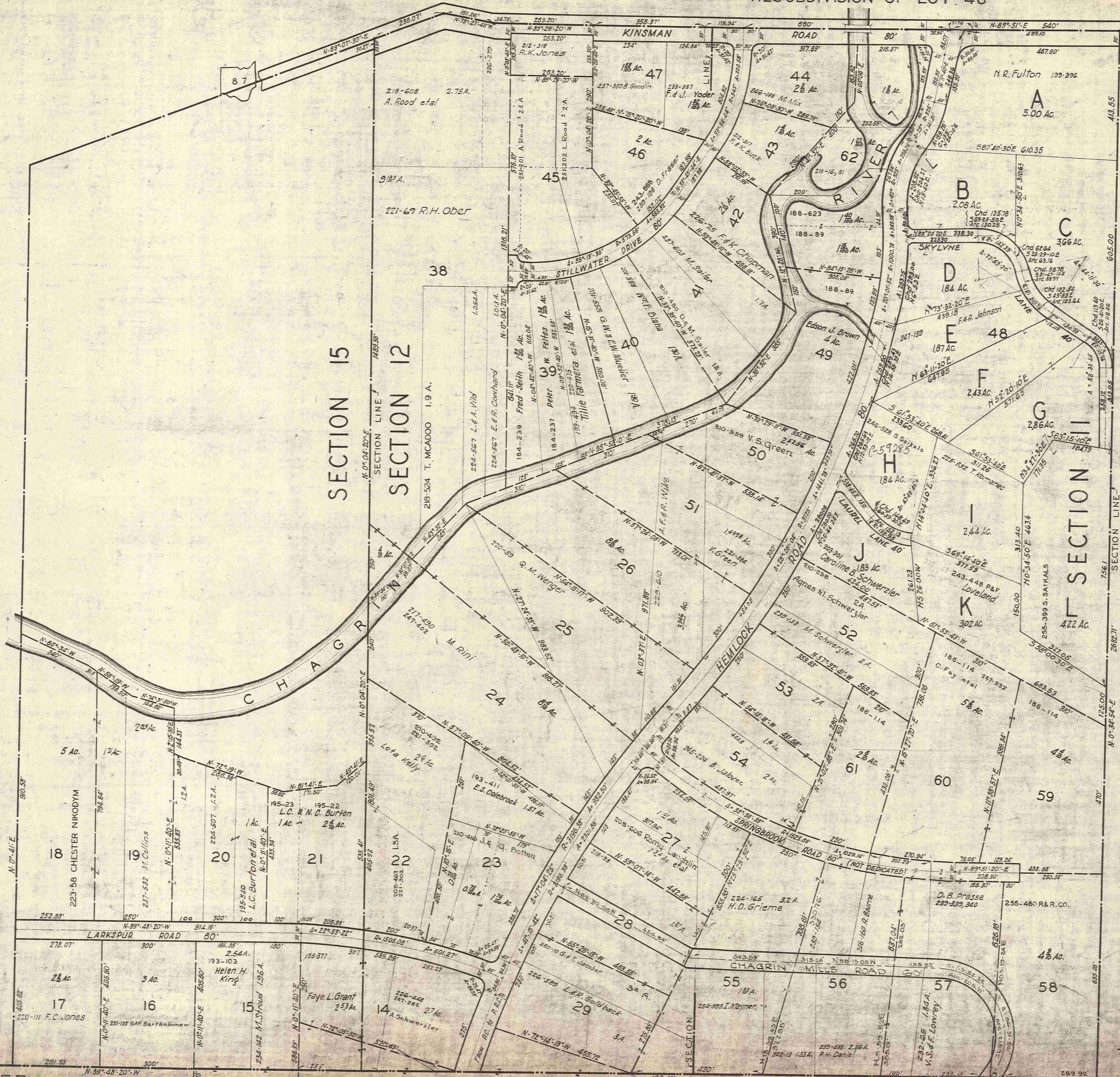
229-418 J. Davis 7 A.

208-492 28 A.
Joel Smith et al

234-25 K. & E. Rink 3 A.

Frank Plzak 40.15 A.

201-154 H. H. & B. Ferris 62.18 A.



NOTE
THE AREAS SHOWN
HEREON ARE
APPROXIMATE, AND
ARE COMPUTED TO
THE CENTER LINES
OF THE STREETS.



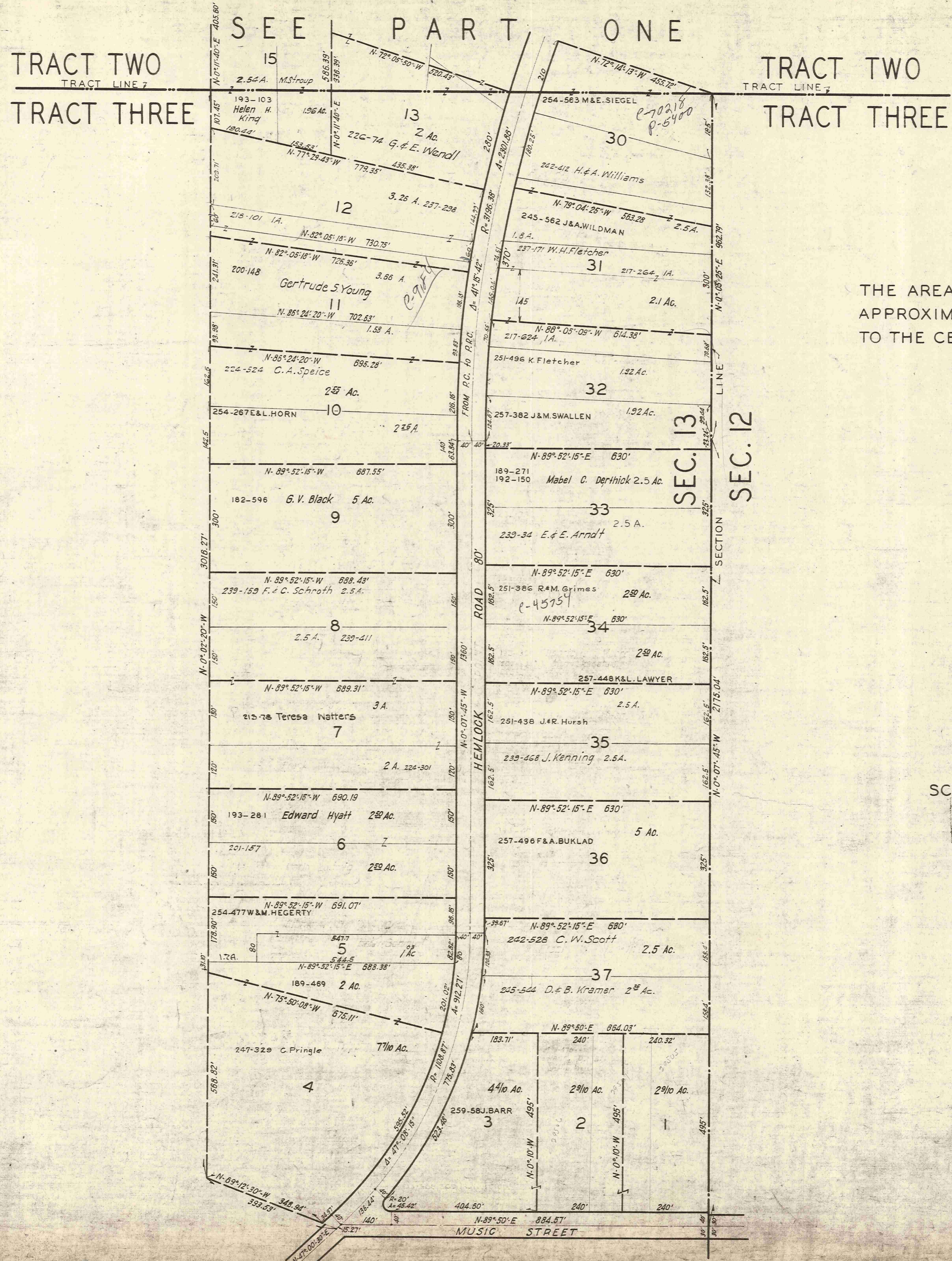
SCALE 1"=2.5 CH.=165 FT.

MAR. 1, 1954

TRACT TWO
TRACT LINE 1
TRACT THREE

SEE PART TWO

14-Q
TRACT TWO
TRACT LINE 1
TRACT THREE



—*NOTE*—
THE AREAS SHOWN HEREON ARE APPROXIMATE, AND ARE COMPUTED TO THE CENTER LINES OF THE STREETS.

SCALE 1IN=2.5CH.=165FT.

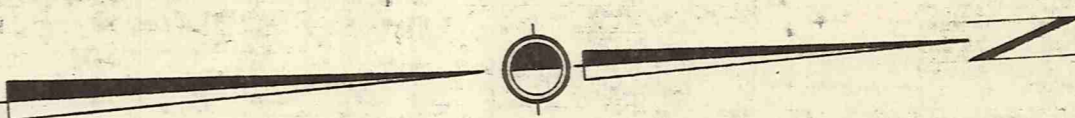
MAR. 1, 1954

RUSSELL TP.

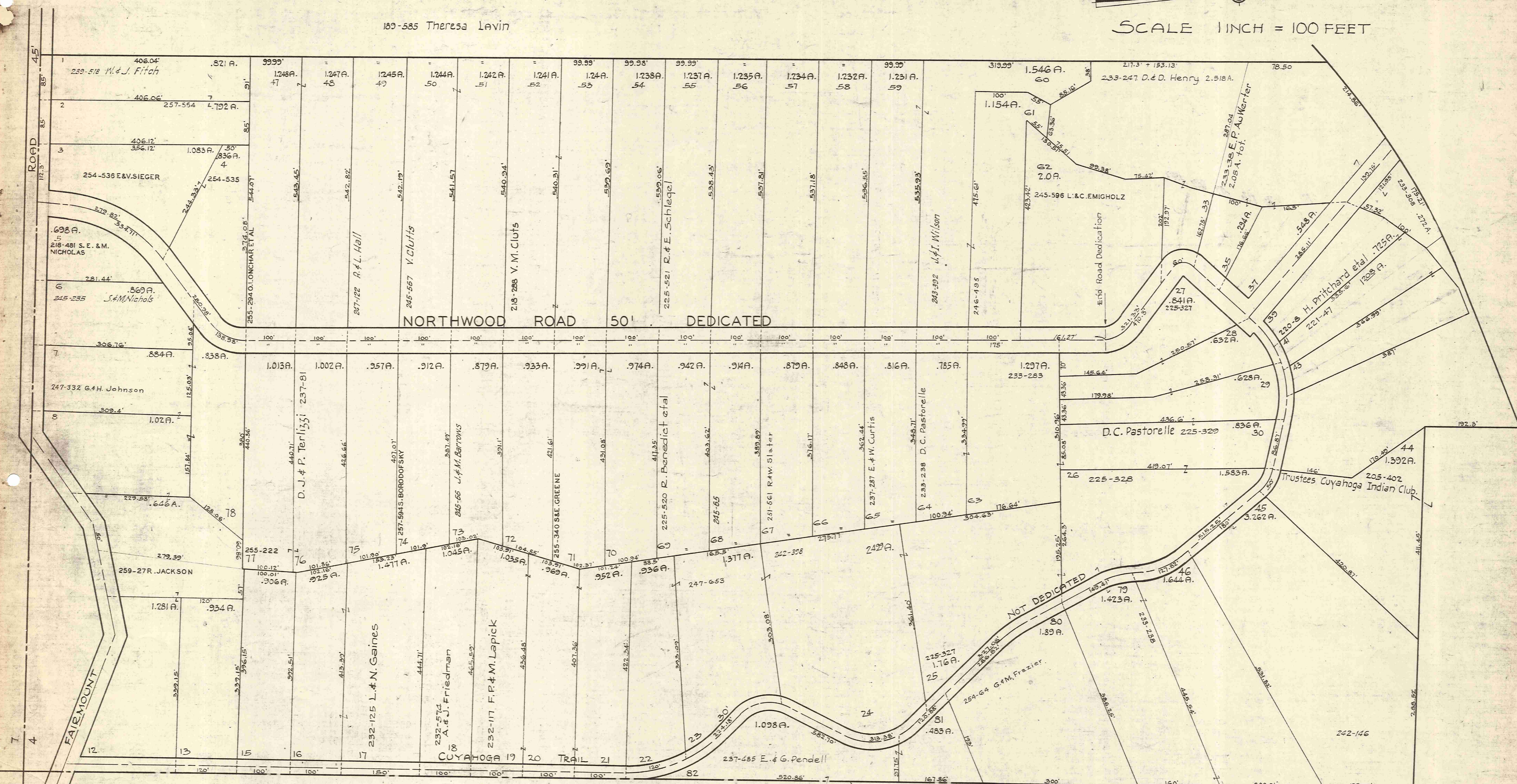
DETAIL PART SECTION 4, TRACT 1

NORTHWOOD HILLS SUBDIVISION - NOT RECORDED

189-585 Theresa Lavin



SCALE 1 INCH = 100 FEET



NOTE: Distances and areas shown hereon are copied from data supplied by THE NUTMEG Land Company

NOTE: All parcels on which ownership is not shown stand in the name of THE NUTMEG LAND COMPANY, VOL. 218 Pg. 182 Records of Deeds* and constitute _____ acres of land as of MAR 1, 1954

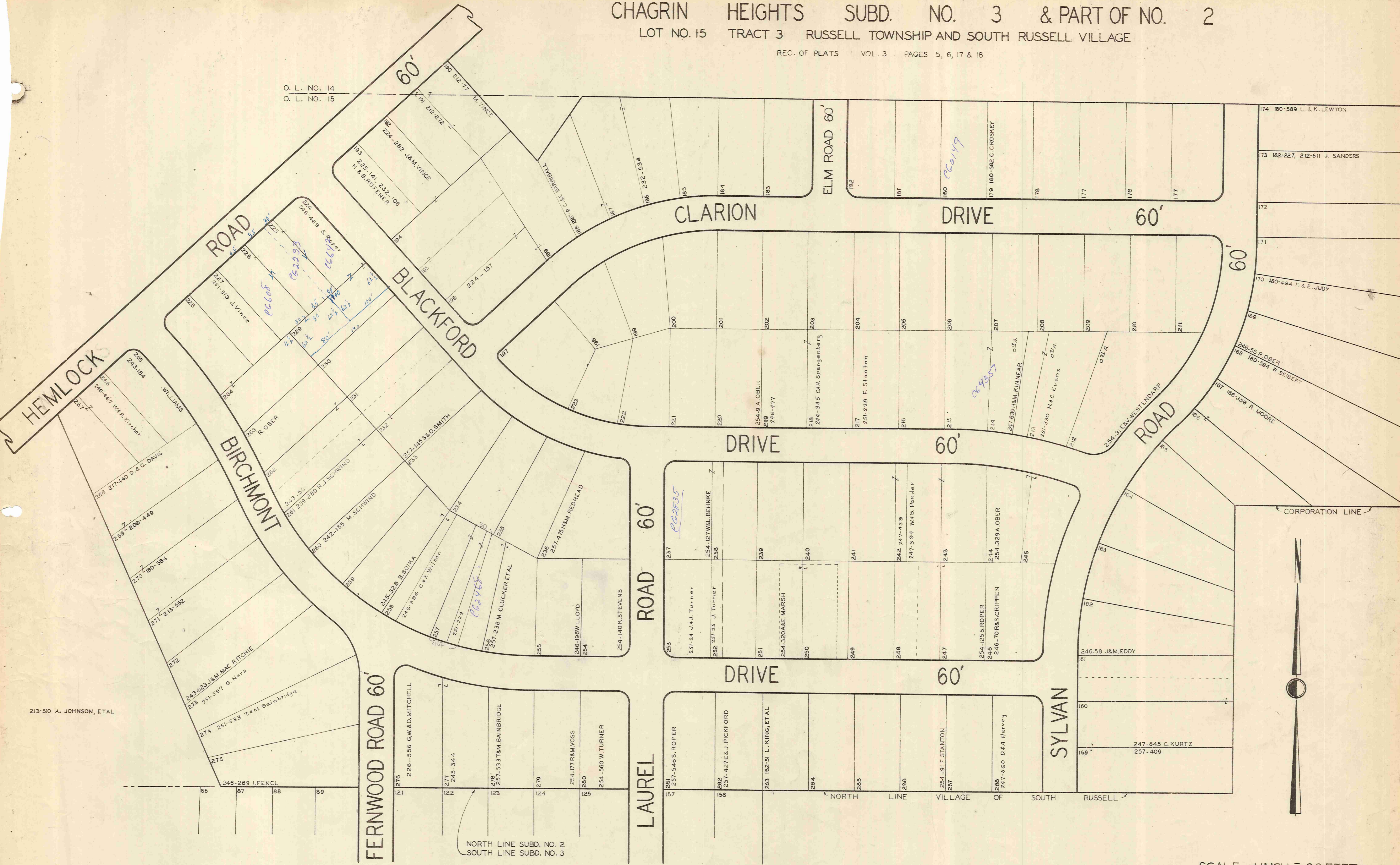
* Conveyed to J. Forrester & E. Elbrecht Trustees, Vol. 243 pg. 45

SECTION 6
SECTION 5
SECTION 4

CHAGRIN HEIGHTS SUBD. NO. 3 & PART OF NO. 2
 LOT NO. 15 TRACT 3 RUSSELL TOWNSHIP AND SOUTH RUSSELL VILLAGE

REC. OF PLATS VOL. 3 PAGES 5, 6, 17 & 18

O. L. NO. 14
 O. L. NO. 15



213-510 A. JOHNSON, ETAL

NORTH LINE SUBD. NO. 2
 SOUTH LINE SUBD. NO. 3

SEE 14 - T - SOUTH

SCALE 1 INCH = 80 FEET

MAR. 1, 1954

NOTE: ALL LOTS OF WHICH OWNERS ARE NOT DESIGNATED STAND IN THE NAME OF FRANK STANTON

415
 80
 200

261
 80
 158
 1712

240
 760

14-T NORTH

Plan Showing Re-arranging of
PAW PAW LAKE
 SUBDIVISION
 SOUTH RUSSELL VILLAGE
 Formerly Russell Township
 Geauga County - Ohio

232-206 F. & S. Edmonds

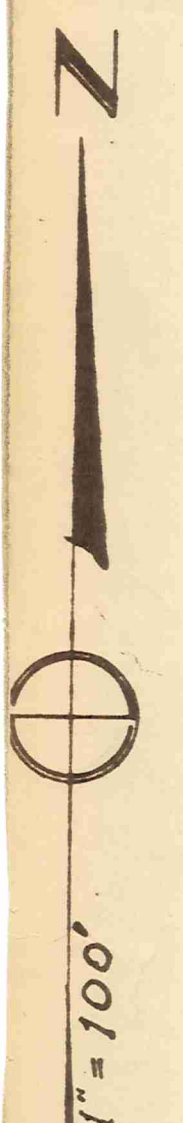
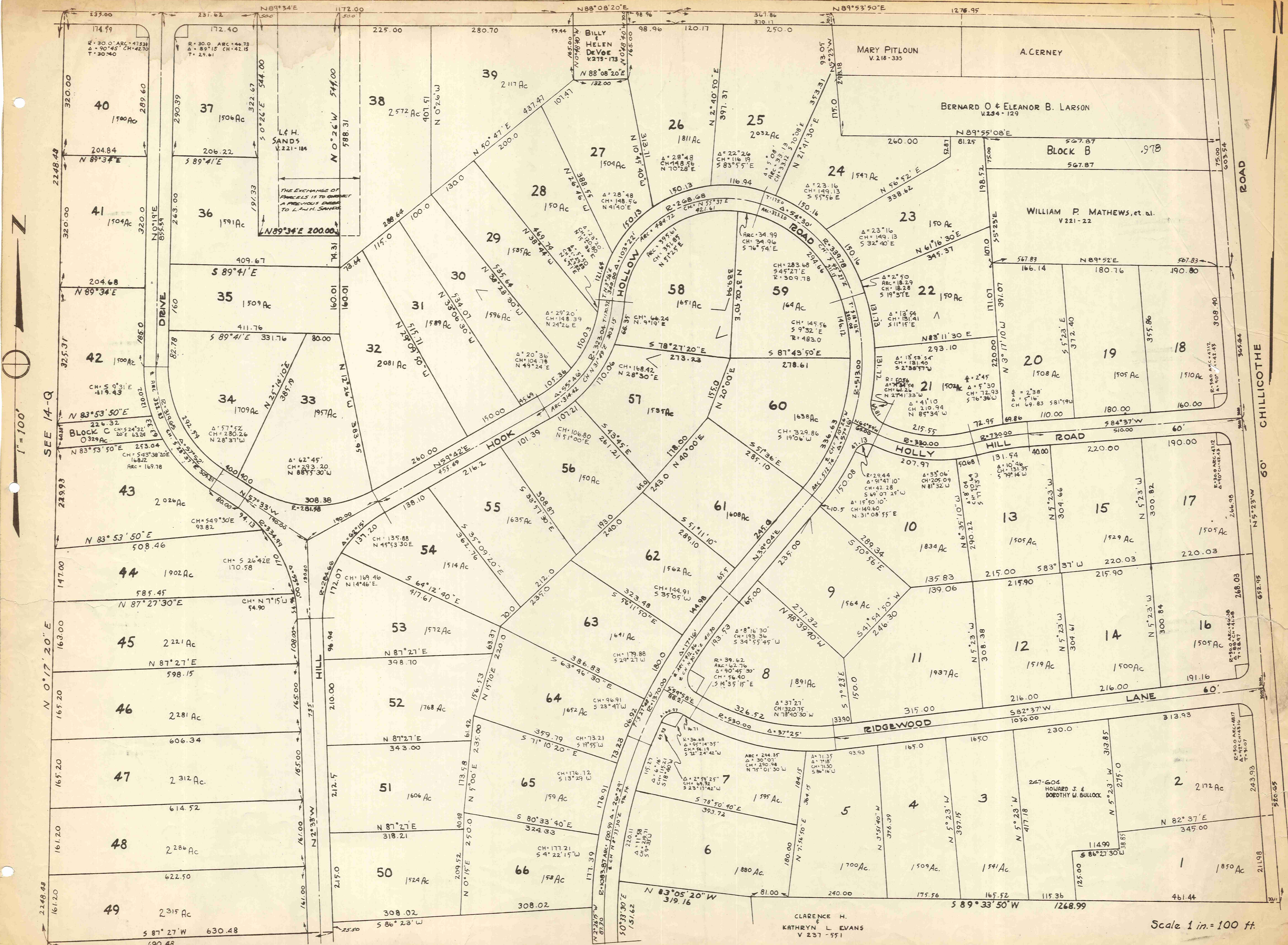
O. Lot No 1
 Original Lot Line
 NS-47-00E
 O. Lot No 2

Scale 1 inch = 100 feet



MAR. 1, 1954

239-233 Paw Paw Lake Home Co.
 Not in orig. Sub'd'n 296A.



HEMLOCK HILL DEVELOPMENT

Vol. 6 pgs. 5-6-7-8-9-10 Recorder's Platbook.

NOTE: APPROVAL OF THIS PLAT BY THE COUNTY COMMISSIONERS AND OTHER PUBLIC BODIES DOES NOT CONSTITUTE THE MAINTENANCE OF ROADS.

Scale 1 in. = 100 ft.